

The background of the slide is a photograph of a blue sky with wispy white clouds above a body of blue water with gentle ripples. The text is centered and rendered in a white, sans-serif font with a thin black outline.

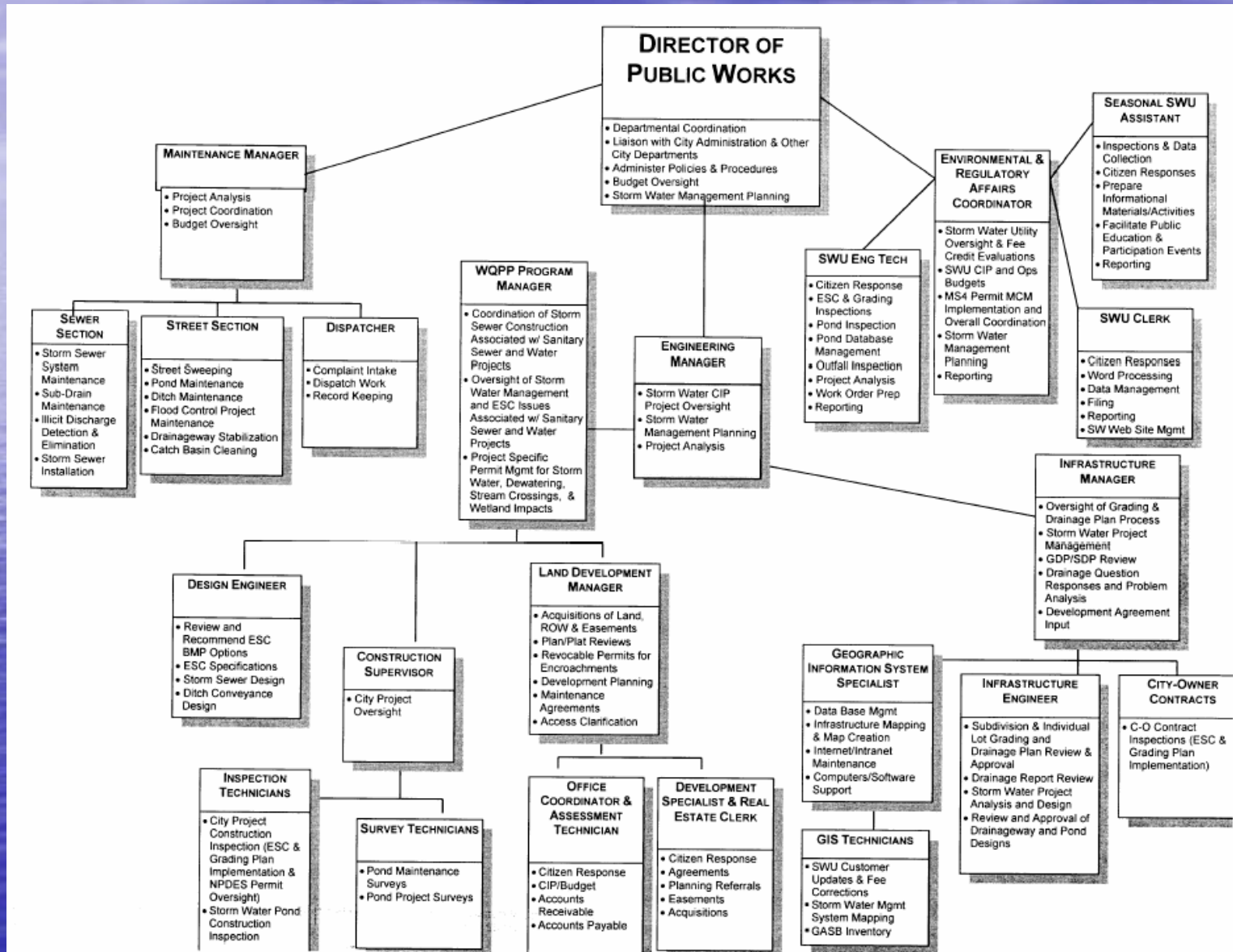
Annual Report of Progress 2004 MS4 Permit

Rochester City Council Meeting
3/21/05

Annual Report Requirements

- Status of compliance with permit conditions
- Appropriateness of the Best Management Practices (BMPs)
- Progress toward achieving Measurable Goals (MGs)
- Changes in BMPs and MGs
- Activities planned for 2005

Permit Team



MCM 1 – Public Education

- 2 Press releases
- 6 RNeighbors Newspaper articles
- Distribution of litter bags at the RochesterFest parade
- Sesquicentennial display
- Maintenance of kiosk materials and the Storm Water Web site
- Rotating displays at City Hall
- Handouts at 3 County Fair Booths
- 2 ESC workshops and 1 fen workshop
- Storm water contacts list
- 5 presentations
- 7 storm water related articles in the RPB
- 3 staff training sessions

MCM 2 – Public Participation

- Public meeting on 2003 annual report
- Promotion of volunteer opportunities on the Storm Water web site
- Summer of Service volunteers (litter collection and storm drain marking)
- Lourdes community service project volunteers (storm drain marking)
- Montessori students (SWM infrastructure)
- John Adams students (SW e-cybermission)
- Complaint processing procedures

MCM 3 – Illicit Discharges

- Develop storm sewer system map (new DNR protected waters, new wetland application sites, pond update & QA/QC, SW pipes & points update)
- WQPP elimination of failing septic systems (5 projects installing sewer main, 200 service stubs, 195 homes connected, 195 septic systems abandoned)
- Collection of RV sewage at the RWRP Sewage Pump Out Stations (~783 discrete uses for ~4,532 gallons of sewage collected and treated)
- 12 illicit discharge responses (dumping into catch basins, vehicle fluid leaks on streets, grass/brush/garbage dumping into drainage ways, permitted industrial discharges, one unidentifiable discharge into a creek)

MCM 4 – Construction Site SWM

- Inspect 67 construction projects/sites for ESC compliance (~4 inspections/site = ~268 inspections)
- Review and/or approve 135 Subdivision and 54 Individual Lot grading plans
- Respond to 109 ESC/drainage complaints
- Review 47 Site Development Plans and 23 General Development Plans to provide comments on SWM adequacy
- ESC Task Force recommendations for ordinance upgrades

MCM 5 – Post-Construction SWM

- 3 Storm Water Management Plan addenda
- Design of 31 new public SW ponds (of which 20 have been completed and 11 are still in progress)
- Design of 14 new private SW ponds (of which 12 have been completed and 2 are still in progress); Maintenance Agreements executed for 11 of these ponds
- Completion of 6 slope and drainage way stabilization projects

MCM 5 – Post-Construction SWM

- 15,160 LF of new storm sewer and 190 new storm points constructed with new development
- New storm sewer between Eagle Ridge and 2nd St. SW to rectify inadequate capacity ditch
- Review and/or approve 135 Subdivision and 54 Individual Lot grading plans
- Comment on one Fen Management Plan addendum
- Development of “Fen-Friendly Neighbor” brochures for Barony Woods and Stonehedge

MCM 5 – Post-Construction SWM

- Issue 96 grading permits
- Approve 47 Site Development Plans and 23 General Development Plans
- Inspect 49 storm water ponds
- Survey 13 ponds for capacity evaluation
- Repair and/or clean 2 ponds
- Research pond nuisance management needs (no action needed re: WNV; preparation of woody vegetation management and mowing/litter control contracts)

MCM 5 – Post-Construction SWM

- Develop policies to enable transfer of private residential ponds meeting standards to the City
- Develop encroachment policy to act on easement impediments & dumping (will need to be revisited at a later date)
- Current SW Pond Tally (255)
 - City (61)
 - Easement (16)
 - Transition (66)
 - State (11)
 - County (2)
 - Private (99)

MCM 6 – Good Housekeeping

- Inspection and maintenance of storm sewer infrastructure
 - 282 outfalls were inspected and electronically located (est. 38%)
 - 35 outfalls were maintained
 - 1,995 curb miles of streets were swept
 - 2,448 catch basins were cleaned
 - 200 catch basins were repaired
 - 25 catch basins were replaced

MCM 6 – Good Housekeeping

- Reporting (1st Annual Report – 2003)
- Record keeping
 - Evaluate the ASIST storm water computer modules
 - Develop a spreadsheet to track outfall inspection and maintenance activities
 - Upgrade outfall data collection with GPS data collection unit
 - Evaluate electronic ESC inspection systems for hand-held computers

Other

- No structural pollution control devices
- We are not relying on other entities to satisfy any of our permit requirements
- Discharges to Restricted Waters; analysis of impacts to and identification of BMPs to protect 3 calcareous fens (Outstanding Resource Value Waters)

Incomplete Tasks - Deferred

- Inadequate staff time to complete:
 - ESC/drainage ordinance upgrades
 - New employee orientation materials
 - Comprehensive education plan in coordination with others
 - IDDE ordinance
 - Departmental audits of O & M plans & job-specific staff training

Compliance Summary

- Progress toward meeting measurable goals
 - MCM 1 – 90% (need comprehensive educational plan)
 - MCM 2 – 100%
 - MCM 3 – 80% (need IDDE ordinance, training, education)
 - MCM 4 – 90% (complete ESC ordinance upgrades)
 - MCM 5 – 90% (complete drainage ordinance upgrades)
 - MCM 6 – 80% (complete departmental audits/ staff training)
- BMPs are appropriate
- No proposed changes in BMPs/MGs except deferral of BMPs noted above

Budget Review

Revenues:

• Storm water utility fees	\$3,031,121
• Storm water management plan area charges	\$ 714,125
• Grading Plan Check fees and Grading Permit fees	\$ 51,396
• Interest/investment earnings on fund balances	<u>\$ 44,713</u>
TOTAL	\$ 3,841,355

Expenditures:

• For all tasks described above	\$ 3,068,280
---------------------------------	--------------

(+ funds encumbered for projects underway, but not yet completed)

2005 Highlights

- Make headway on 5 deferred BMPs
- Tackle additional "on-deck" CIP projects
- Upgrade ESC guidance materials & inspection/enforcement procedures
- Complete SWM GIS databases
- Address new permit requirements:
 - Annual stockpile inspections
 - Source Water Protection Area discharge plan
 - Non-degradation assessment and planning